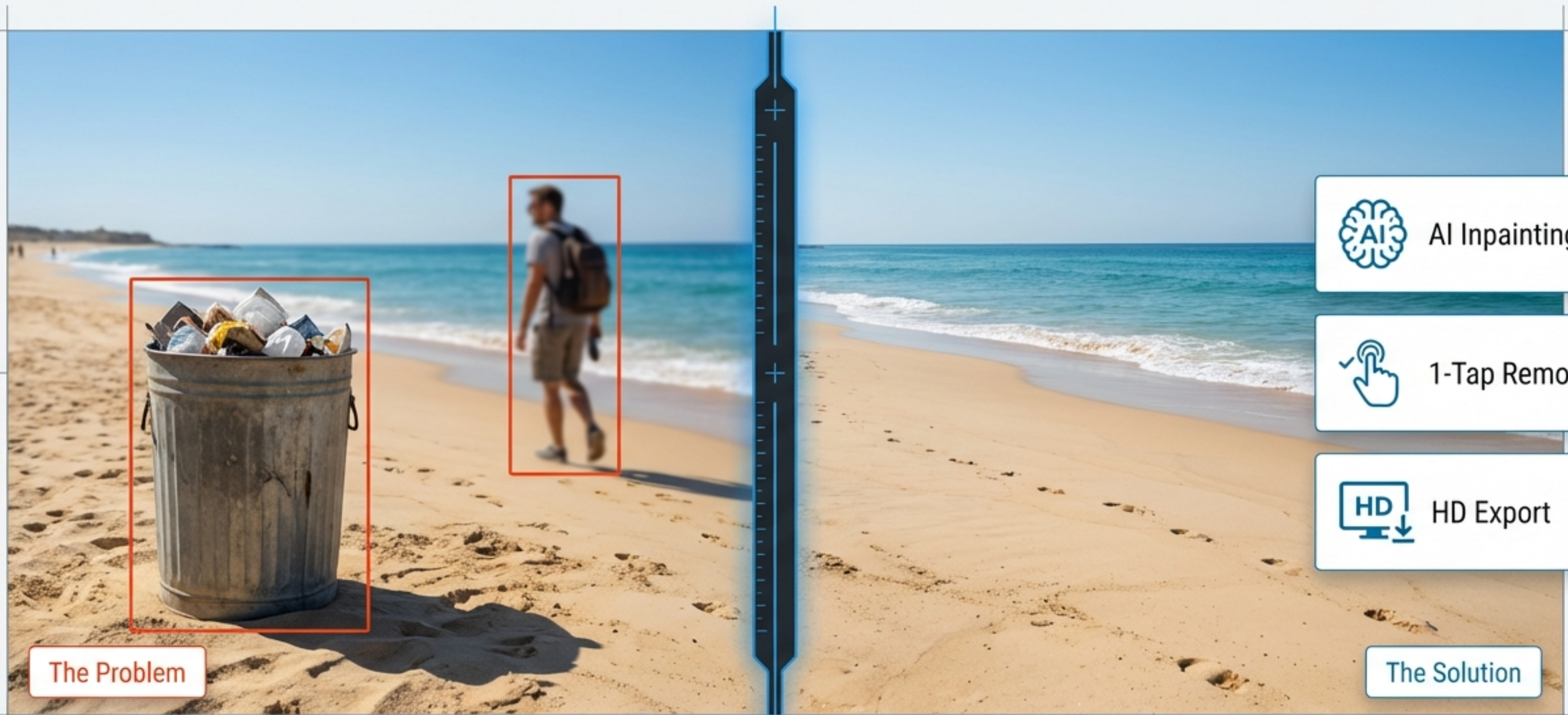


Magic Eraser APK (2026): Advanced AI Object Removal & Inpainting



The Problem

The Solution

Algorithm: GAN-Based Synthesis (v4.1)	Processing Time: 0.3s (avg)	Output Resolution: Up to 4K	Supported Formats: JPG, PNG, RAW	Data Privacy: Local Processing, No Cloud Upload
--	--------------------------------	--------------------------------	-------------------------------------	--

The Digital Darkroom Dilemma: Ruined Shots & Flawed Fixes

Native Editors



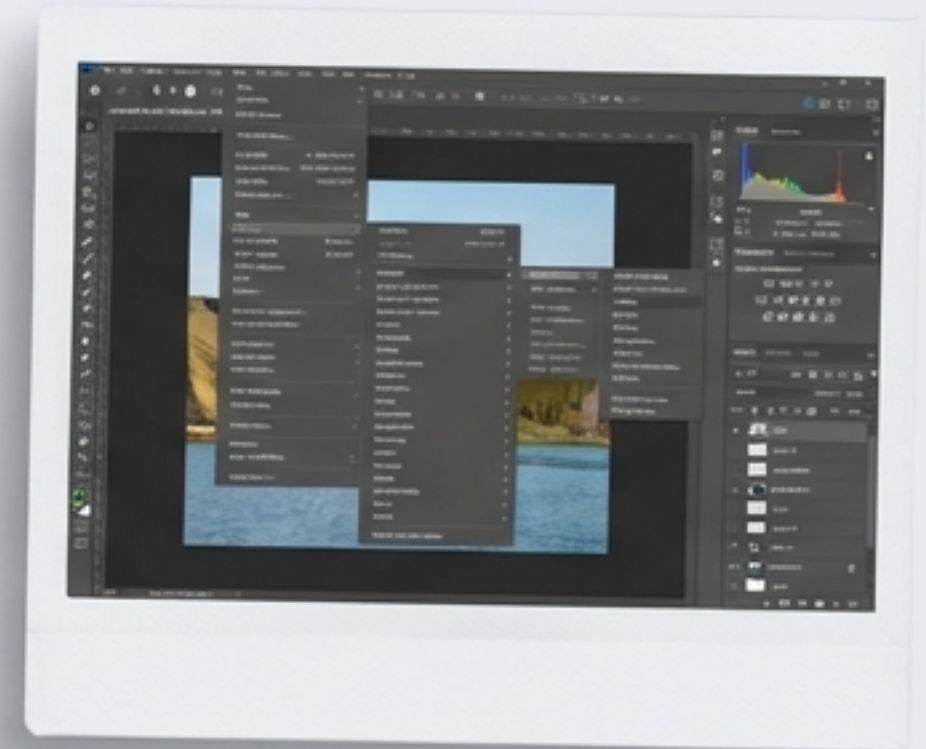
Basic blurring destroys local textures.

Freemium Traps



Paywalled exports.

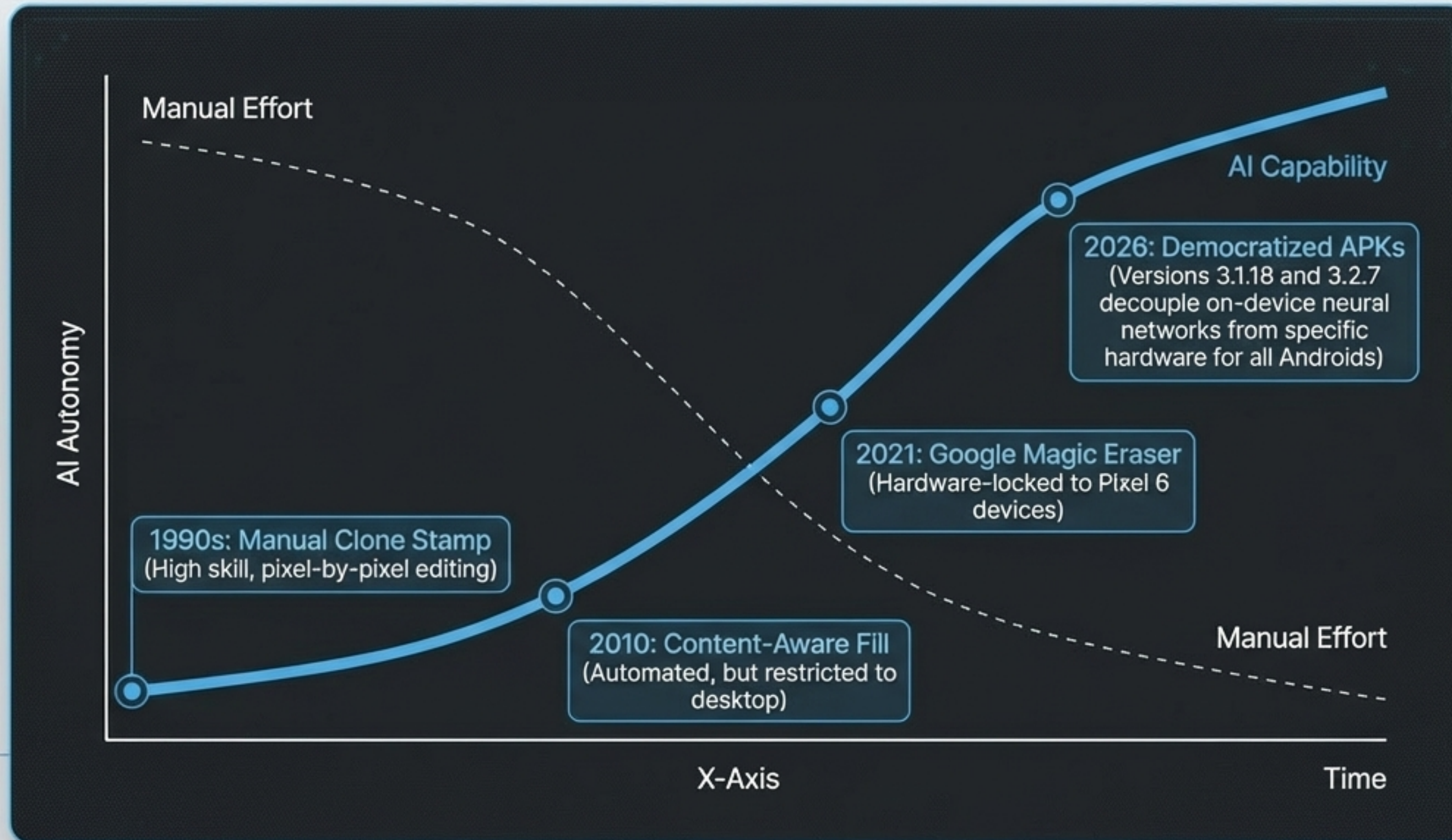
Heavyweight Desktop



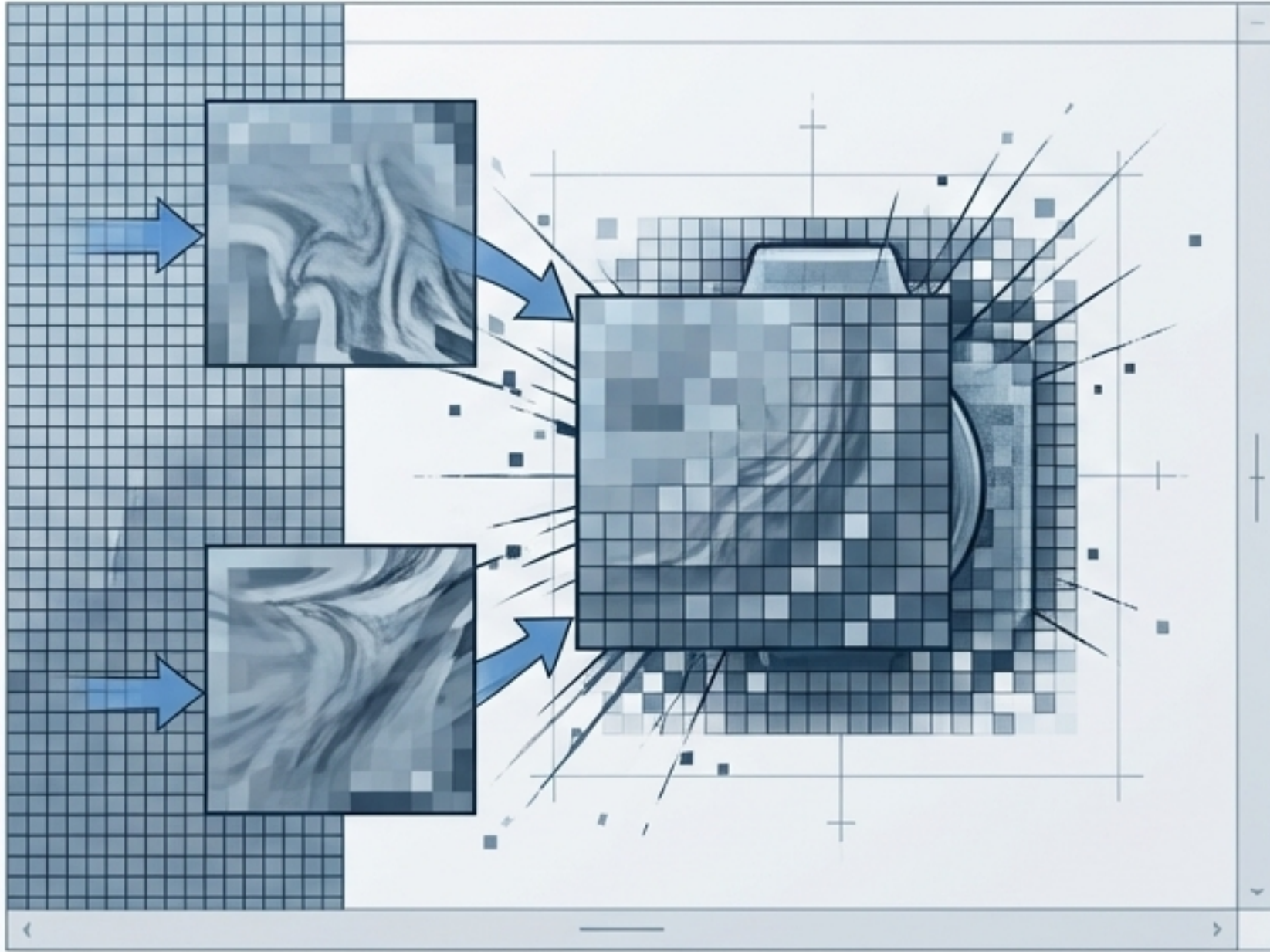
Pro tools require \$22.99/mo (Adobe Photoshop) and high technical skill.

The Gap: Users need a free, on-device AI solution that actively generates background textures without requiring a subscription.

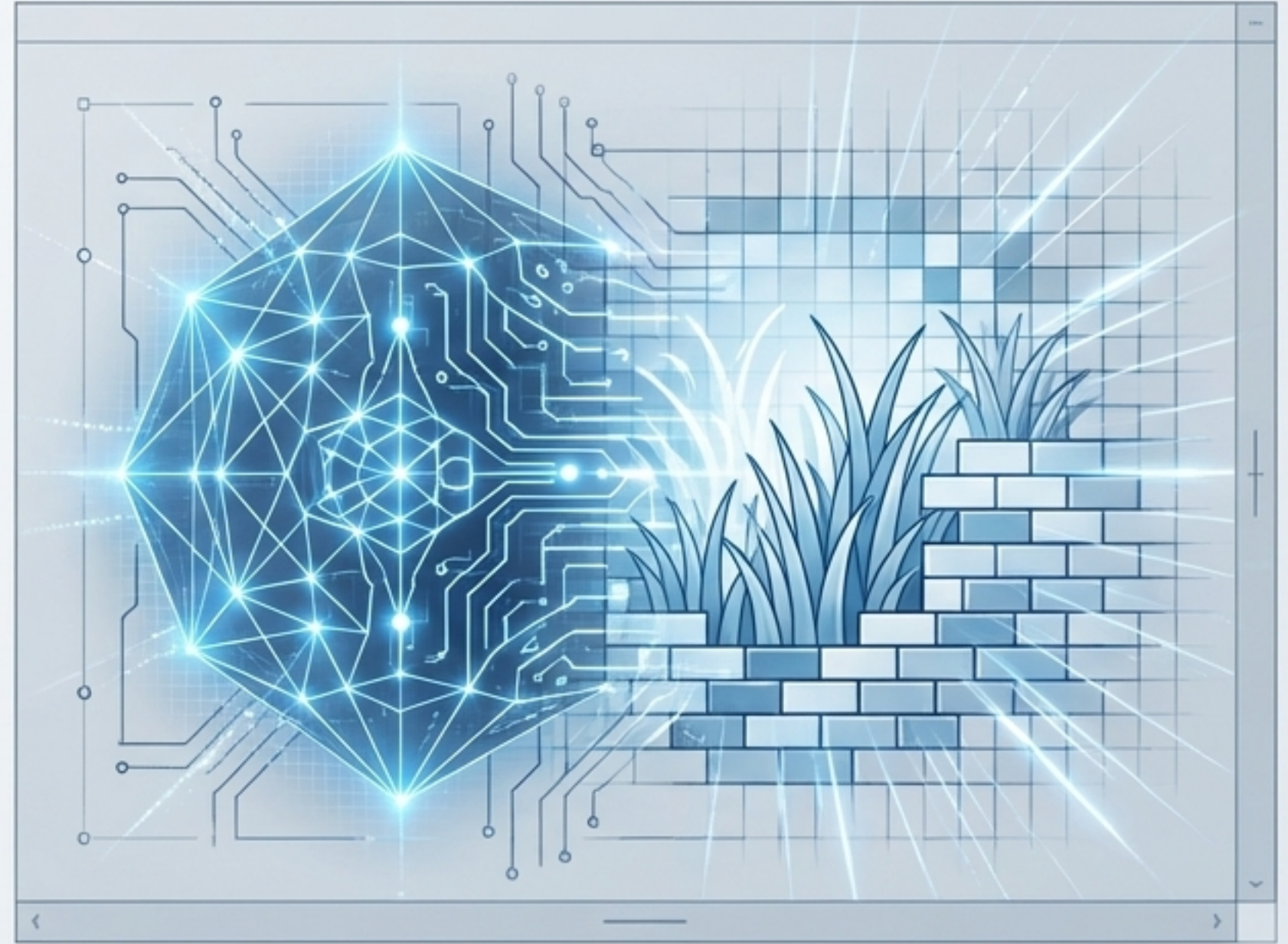
The Evolution of Image Inpainting



Mechanism: Pixel Cloning vs. Generative Inpainting



Cloning (Obsolete): Stretching existing data.



Inpainting (Modern): Synthesizing new environmental data.

The highest level of precision in mobile editing now comes from **localized AI inpainting**. It's no longer about just removing the **object**, but seamlessly synthesizing the background texture to trick the human eye. – *Photography Tech Analyst, Claid.ai (2026)*

The On-Device Execution Pipeline



Step 1: Precise Selection

Define the target area using smart edge-detection.



Step 2: Localized Processing

On-device AI analyzes surrounding textures to generate fill.



Step 3: High-Fidelity Export

Render and save locally without cloud dependency.

Contextual Awareness Across Photographic Domains

Real Estate

Focus: Linear object removal.



Portraiture

Focus: Organic texture retention.



Product Photography

Focus: Specular highlight reconstruction.



Diagnostic I: Eradicating Ghosting Artifacts

Wrong Way

⚠ Overloading the Neural Network



Right Way

✓ Iterative Erasing for Complex Textures



Rule of Thumb: Never highlight the entire subject at once if the background is geometrically complex.

Diagnostic II: Precision Text & Watermark Extraction



Diagnostic III: Preventing the Plastic Face Effect



Failure State

Optimal State

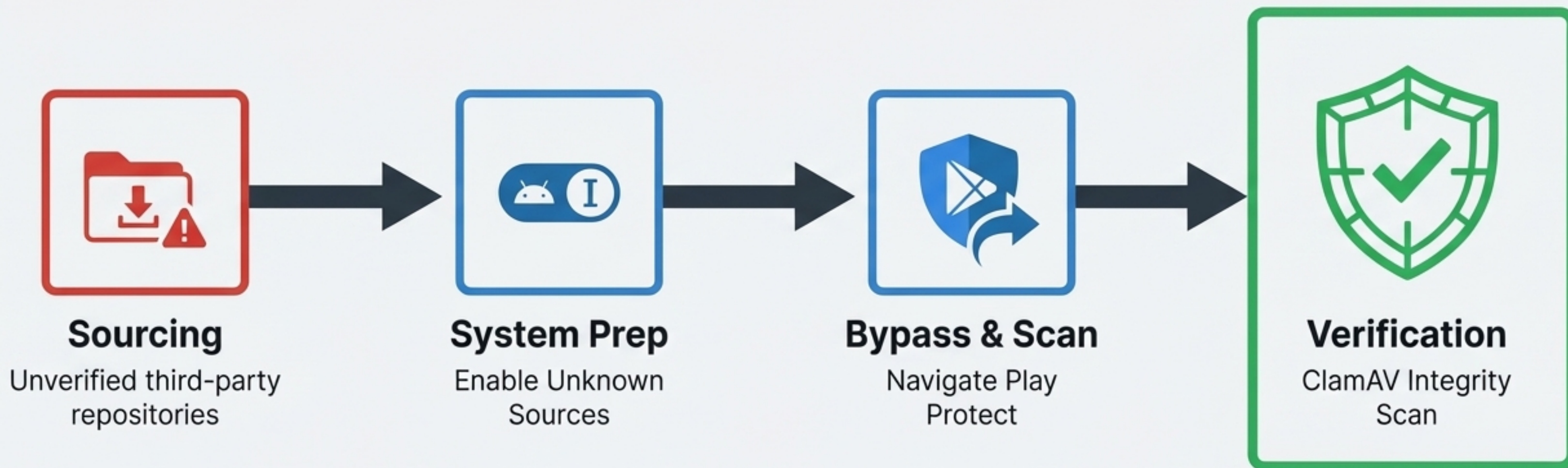
Maximum Intensity =
Texture Destruction

Calibrated Intensity =
Texture Preservation

Intensity: 60%

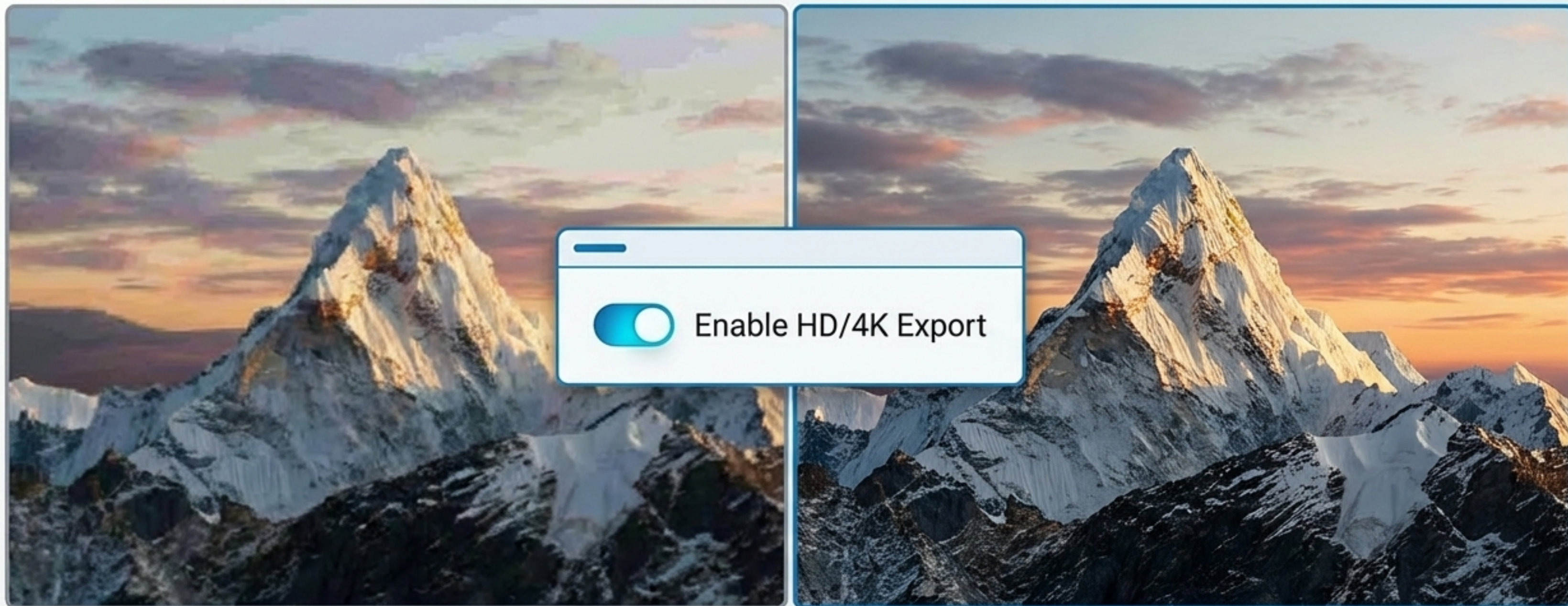


Security Architecture: Safe APK Sideload Protocol



Sideloads grants access to premium tools, but requires active manual verification of package integrity.

Output Integrity: Avoiding Free-Tier Compression Traps



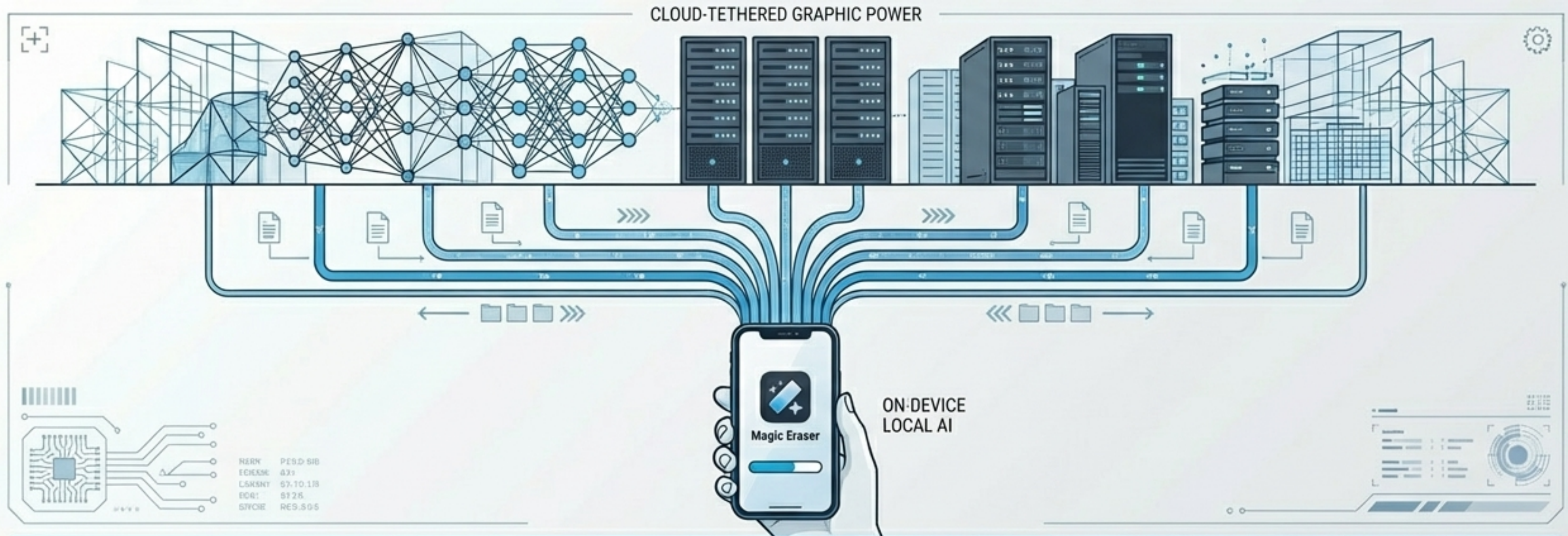
Default Export (Lossy)

Lossless Export (HD/4K)

The 2026 Mobile Editing Landscape

	Magic Eraser APK	TouchRetouch	Adobe Photoshop
Price	Free ✓	\$4.99	\$22.99/mo
Processing	On-Device Local AI ✓	On-Device Algorithmic	Cloud-Tethered
Best Use Case	Casual & Prosumer Inpainting ✓	Specific Line Removal	Complex Layer Compositing
Accessibility	Sideloaded APK	App Store	App Store + Subscription

The Democratization of Professional Inpainting



Magic Eraser represents the **terminal shift** in mobile photography. Professional-grade generative synthesis is no longer hardware-locked or cloud-tethered—it is an localized, on-device reality available to anyone globally.