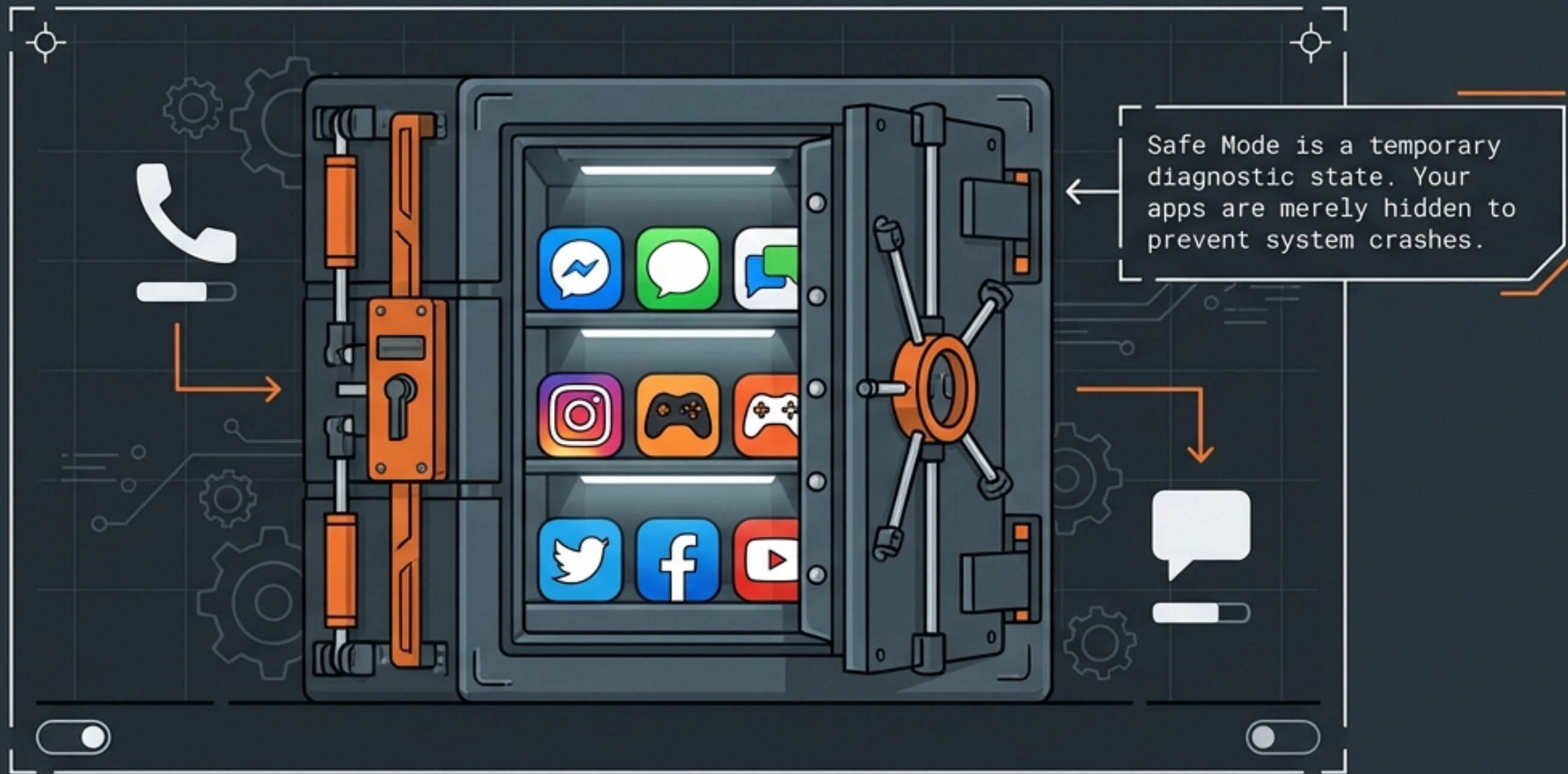


YOUR DATA IS NOT DELETED. IT IS QUARANTINED.



2012:

Android 4.1 Jelly Bean introduces the software trigger.

2018:

Manufacturers unify the hardware volume-down trigger.

2026:

Android 16 integrates a one-tap notification panel bypass.



Why standard restarts keep failing

Hardware Interrupts



CASE PRESSURE / BUTTON DEPRESSION



LINT ACCUMULATION / BUTTON JAM

"When a device continuously loops into Safe Mode, 90% of the time it is a hardware interrupt. A jammed volume-down key sends a continuous signal to the motherboard to enter diagnostic mode."
– Mobile Hardware Diagnostics Expert

Digital Triggers



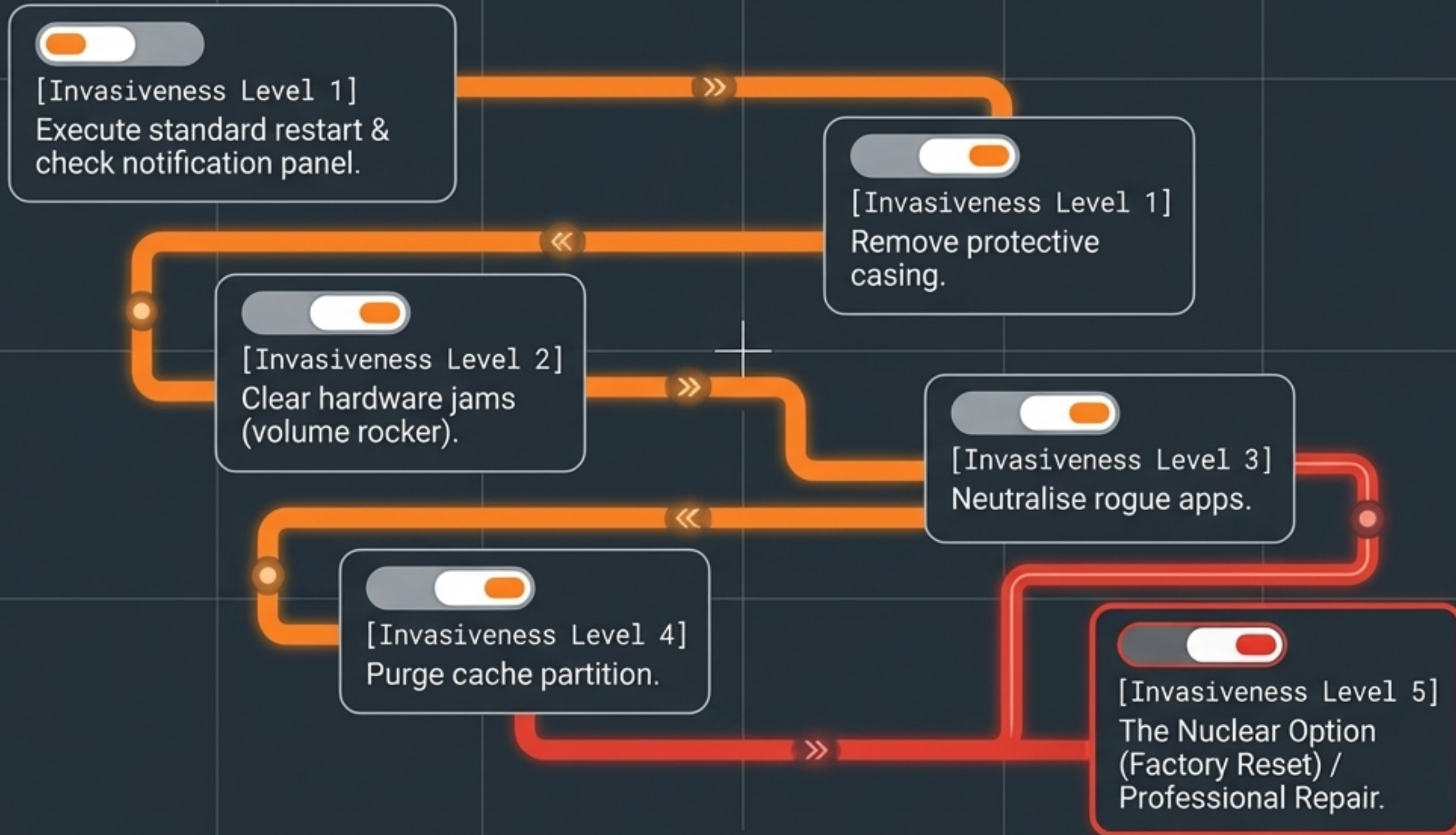
CORRUPTED ROGUE APP



OS CACHE CORRUPTION / SYSTEM TRIGGER



Follow the diagnostic escalation protocol



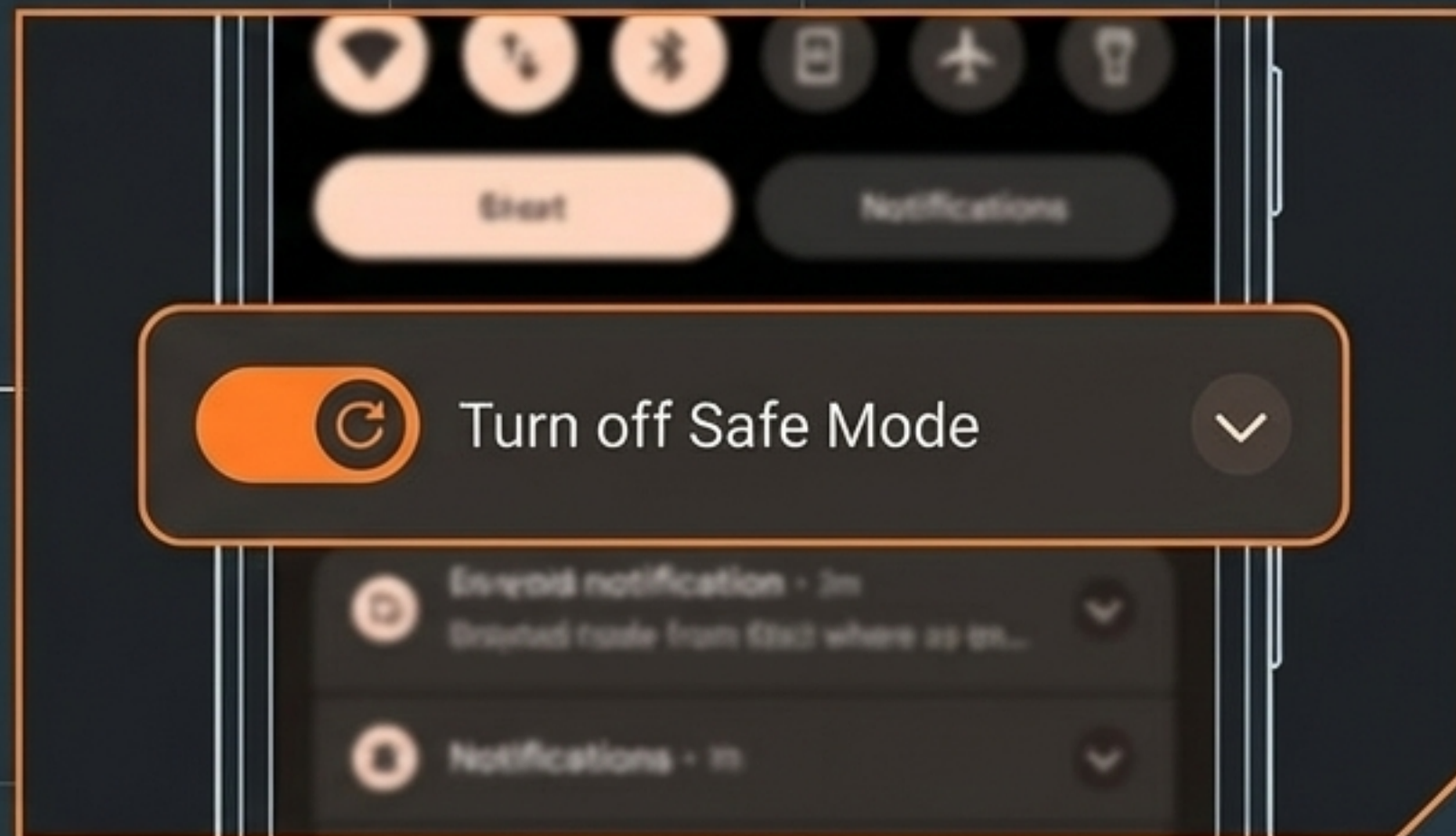
Action 1: Execute a clean software restart

The Traditional Method



Hold the power button and execute a standard power cycle.

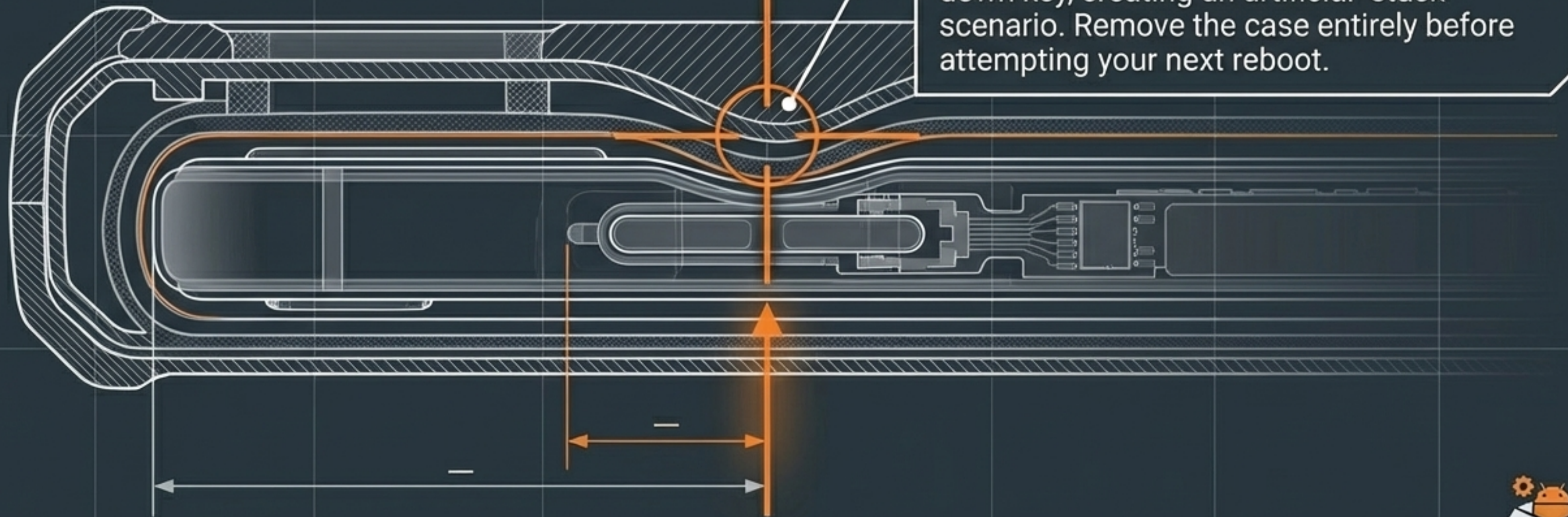
The Modern Bypass



Android 15 and 16 allow you to tap the notification panel shortcut directly, bypassing the physical buttons completely.



Action 2: Eliminate artificial hardware pressure



Action 3: Unblock the continuous boot signal

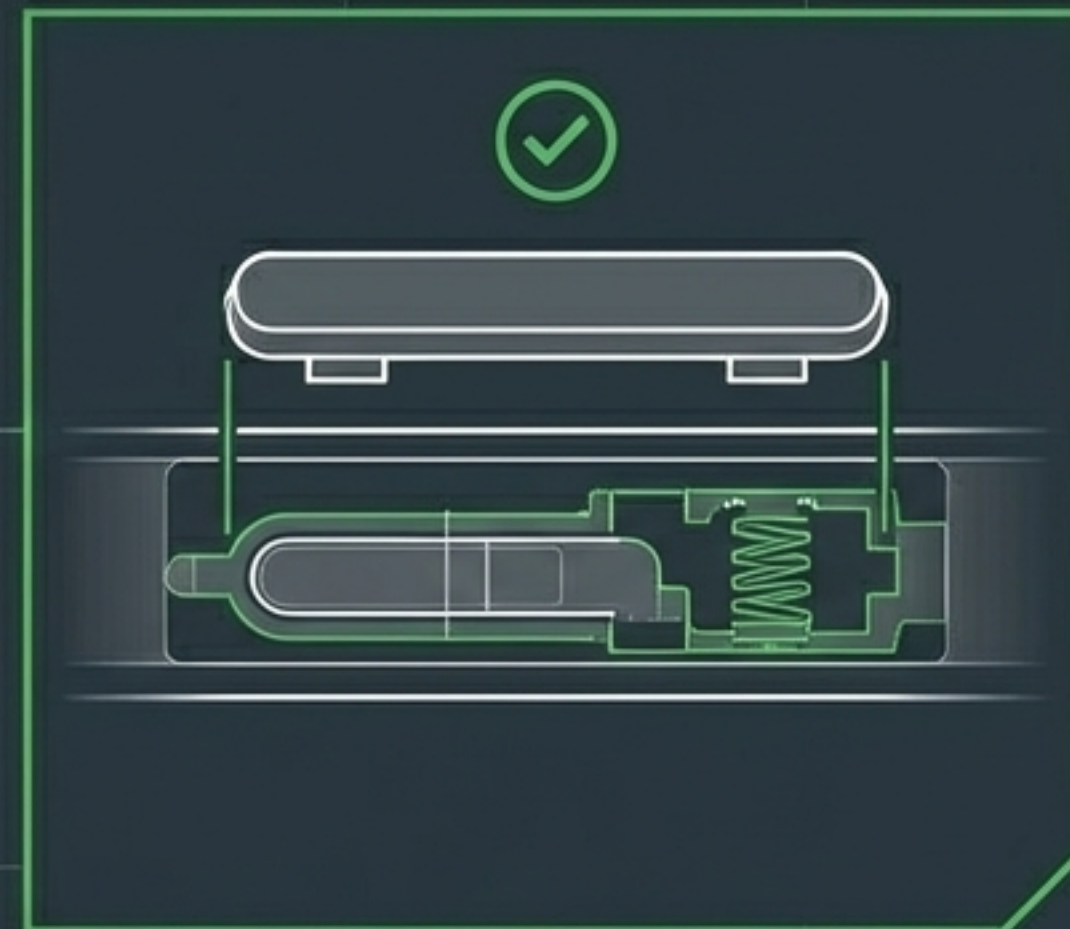
STEP 1: EXPOSE INTERFACE



STEP 2: MITIGATE OBSTRUCTION



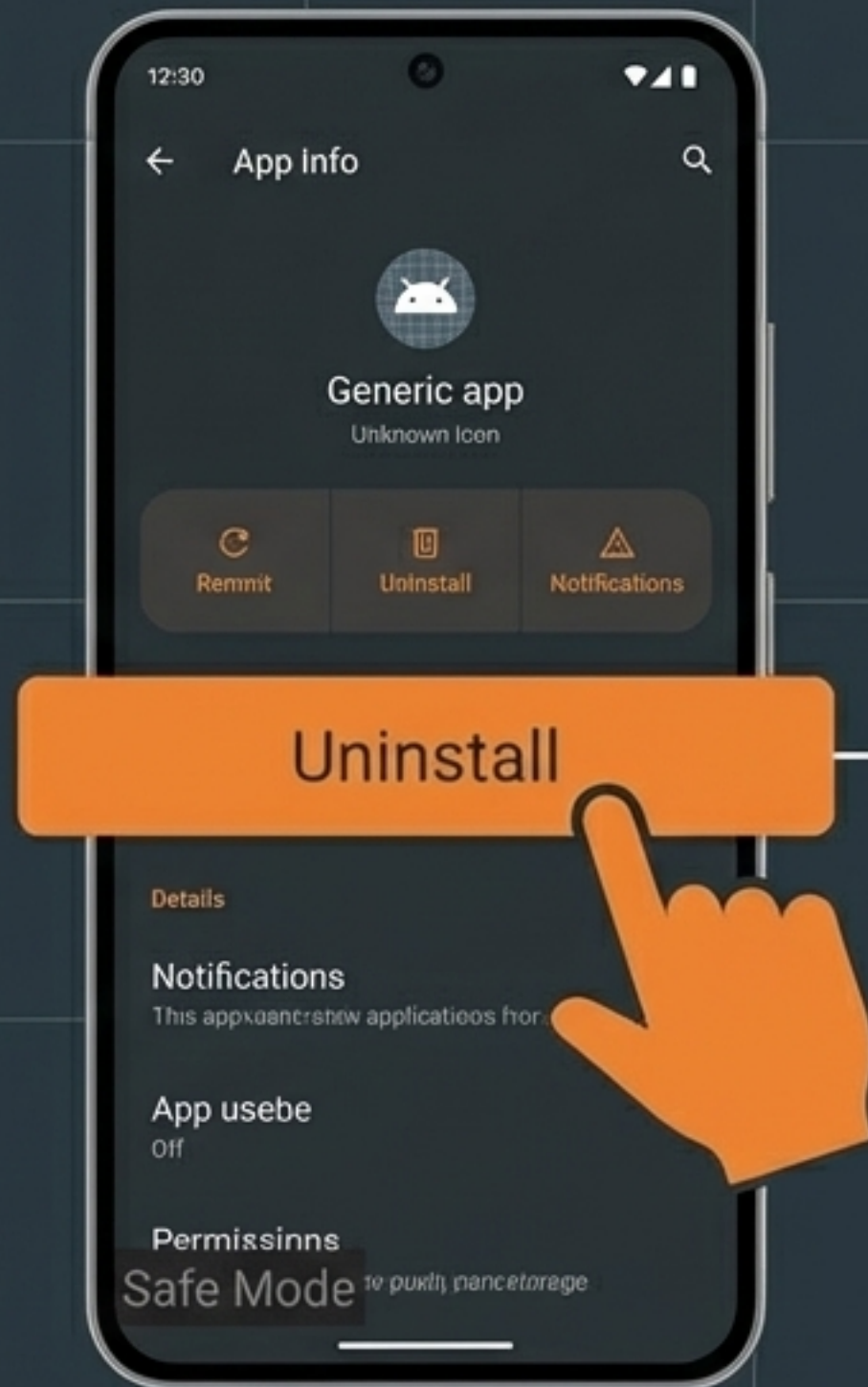
STEP 3: VERIFY CLEARANCE



Pocket lint and debris act as a wedge. If the volume-down button cannot spring back, it sends a continuous signal to the motherboard to boot into diagnostic mode. Clean gently with a soft brush and isopropyl alcohol.



Action 4: Utilise the quarantine to neutralise rogue apps



If hardware is clear, a corrupted app is crashing your system.

Safe Mode's true purpose is providing a freeze-free environment.

Navigate to settings, identify recent unrecognised downloads, and uninstall them safely.



Action 5: Purge the corrupted system cache

```
> Wiping cache partition...
```

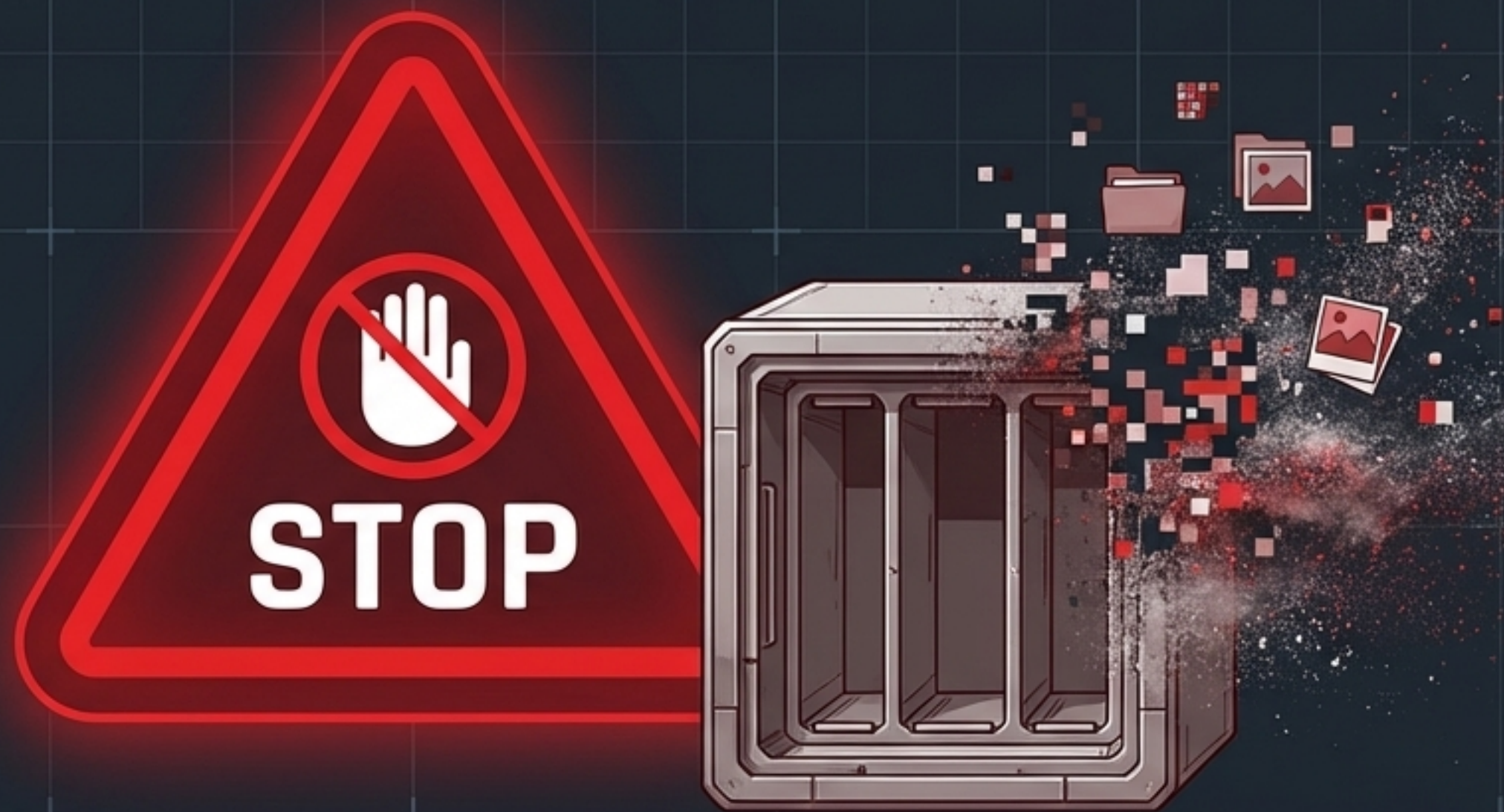


Stubborn software glitches can survive normal reboots. Booting into Android Recovery Mode allows you to clear the system cache partition.

This only deletes temporary background data. It DOES NOT delete your personal files, photos, or passwords.



Action 6: The Nuclear Option



DIAGNOSTIC



A Factory Reset will permanently wipe the operating system clean. All personal data, unbacked photos, and messages will be destroyed.

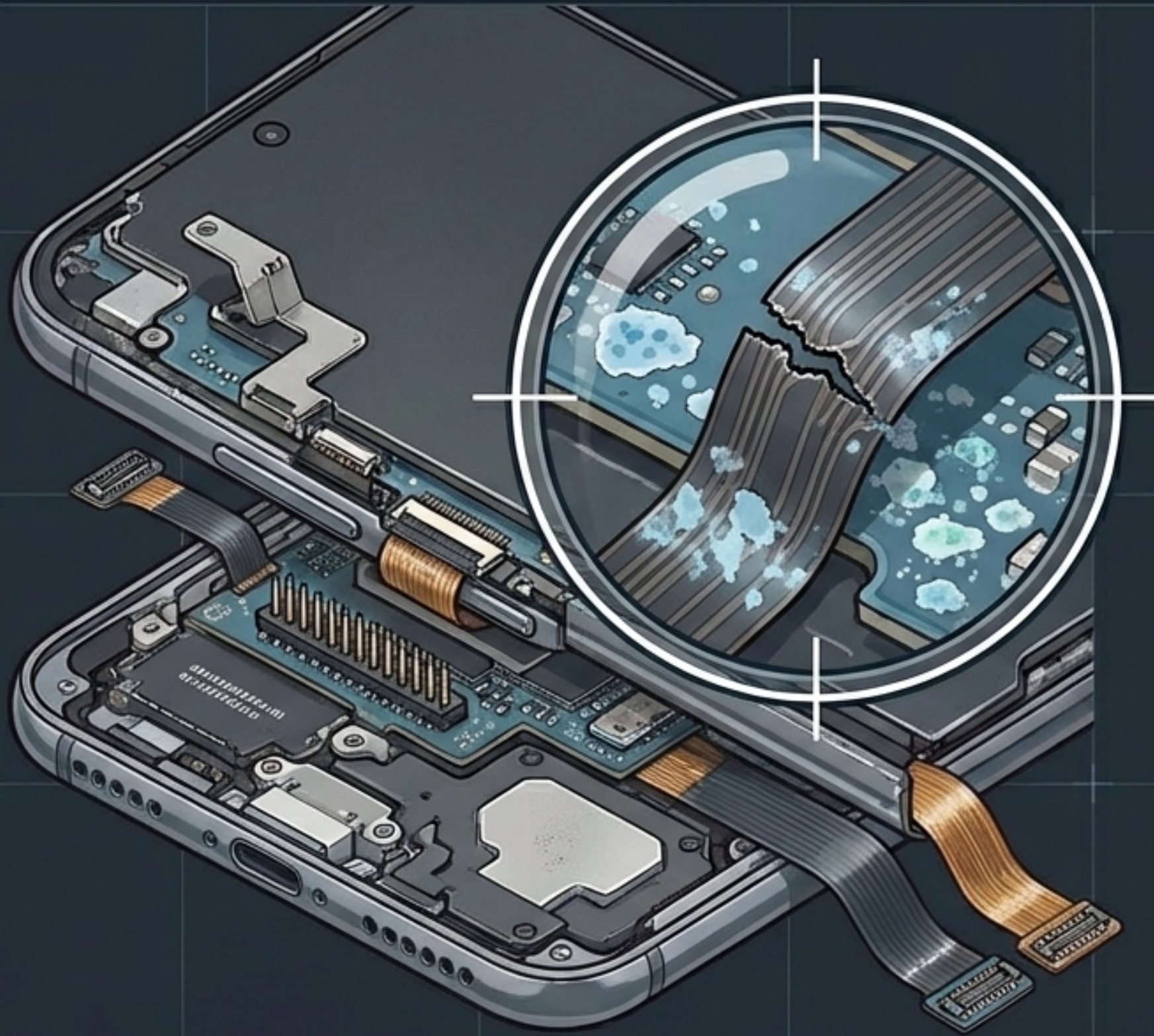
DIAGNOSTIC



Diagnostic Check: Do not proceed unless you have exhausted all physical hardware checks (Steps 2 & 3). A factory reset cannot fix a physically jammed volume button.



Escalation: Professional hardware diagnostics



If the internal volume flex cable is permanently severed or water-damaged, no software restart will work.

Seek professional repair or initiate a warranty claim.



Temporary Workaround Callout: Need to use the phone now? Enable 'Accessibility Menus' in settings to navigate device volume digitally until physical repairs are made.



Diagnostic complete. System restored.



Your apps are back. Your data is safe.
You have **successfully exited the quarantine.**

> Takeaway Note: Keep your device casing clean and monitor new app installations to prevent future Safe Mode loops.

